

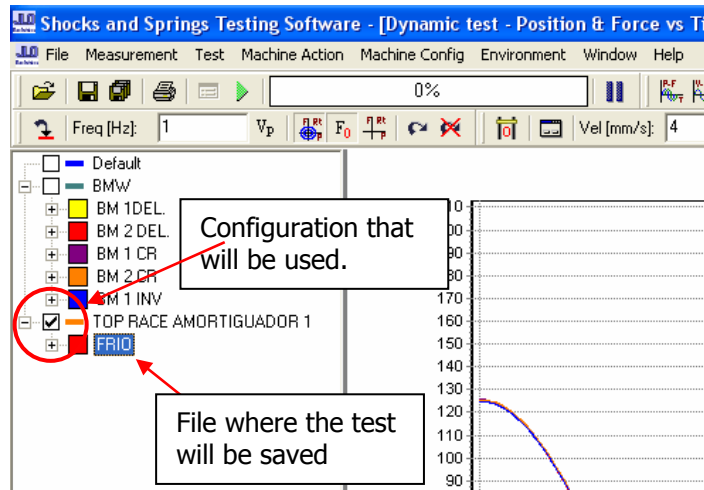
PRONELLO

**SOFTWARE
OPERATION HANDBOOK**

Chapter 3

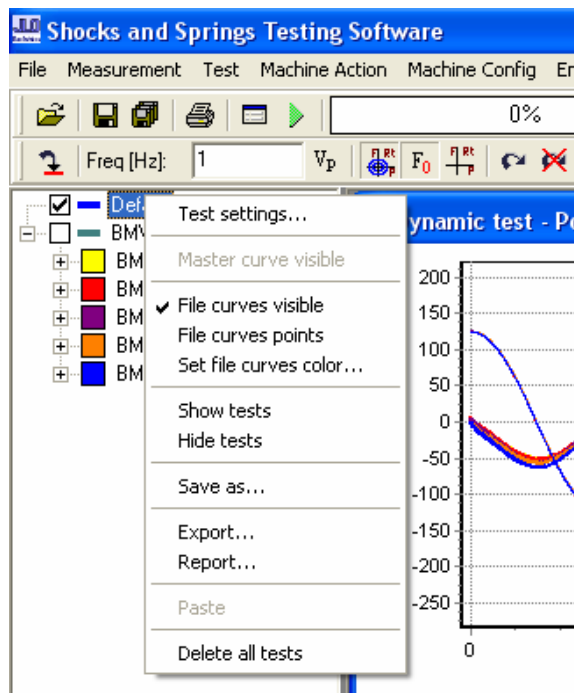
TEST PRESENTATION TREE

When the user begins a test, the machine will use the configuration of the check marked file.



If no previous test files are open, the Default file will be checked and a new test configuration can be set. The test configuration of a previous test file cannot be changed and a new test run will use the configuration of the selected file.

3-1- Right click on a file name:



3-1-1a- Test settings: (Right click menu for the Default file.)
 Opens the test configuration menu. (See Section 1-3 Test)

3-1-1b- Information: (Right click menu for any saved file.)
 Opens the test configuration menu showing how the tests are configured for that file. The user can add other information that will be saved with the file but cannot change the test configuration.

3-1-2- Master curve visible:
 Shows in gray the master curve used for comparing the tests inside the test file. (See Section 1-6-1-c- File graphs)

3-1-3- File curves visible:

Show or hide the test file in the statistics graphics of productivity and quality.
This statistic graphics can be enabled from Environment – Settings – File Graphs.
(See Section 1-6-1-c- File graphs)

3-1-4- File curves points:

Shows or hides the test file points in the statistics graphics of productivity and quality.
Each performed test of the file, is a point in this statistics graphics.
This statistic graphics can be enabled from Environment – Settings – File Graphs.
(See Section 1-6-1-c- File graphs)

3-1-5- Set file curves color:

Sets the color of the test file graph in the statistics graphics of productivity and quality.
This statistic graphics can be enabled from Environment – Settings – File Graphs.
(See Section 1-6-1-c- File graphs)

3-1-6- Show tests:

Shows all the performed tests inside that test file.

3-1-7- Hide tests:

Hides all the performed tests inside that test file.

3-1-8- Save as:

Saves a test file with a different name.

3-1-9- Export:

Exports test data to a .csv or .txt file for all the performed tests inside that test file.

3-1-10- Report:

Makes a report (.txt file) of the file information for all the performed tests inside the test file.

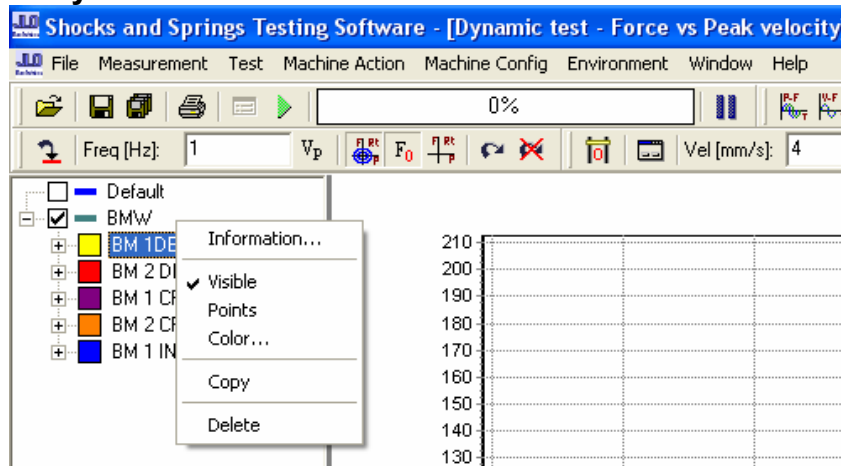
3-1-11- Paste:

Pastes a performed test, which was copied from another test file, into the selected file.
The copied performed test must have been done with the same configuration as the destination file. (i.e. same frequency/velocity, same stroke, same warmup, etc.)

3-1-12- Delete all tests:

Deletes all the performed tests inside the test file. Test configuration and master curve data are preserved.

3-2- Right click on any individual test within a test file:



3-2-1- Information

Opens the test configuration menu showing how the tests are configured for that file. The user can add other information that will be saved with the file but cannot change the test configuration.

3-2-2- Visible

Shows or hides the test curve.

3-2-3-Points

Shows or hides the points of the test curve.

3-2-4-Color

Sets the color of the test curve.

3-2-5-Copy

Copy the test curve to the clipboard to be pasted into another file. (The destination file must have the same test configuration than the copied file).

3-2-6-Delete

Delete the test curve from the file.

3-3- LEFT click on any individual step within an expanded test.

Test curves can be expanded to reveal the individual steps used in that test configuration by clicking the “+” on the left.

Left clicking the individual step will hide or show that curve in the graph area. There is no right click menu.

